

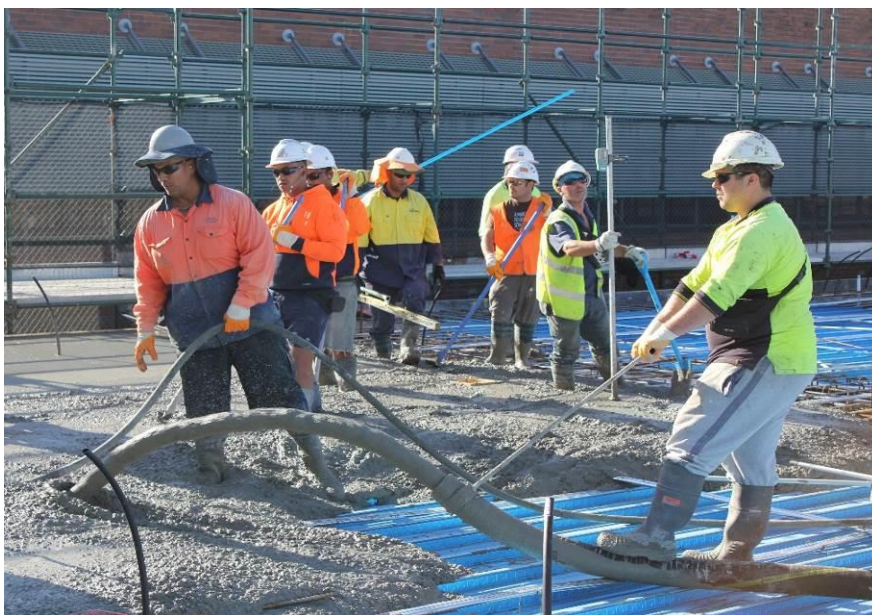


St George Hospital Redevelopment News

Project Milestone: First concrete pour



Above: The first concrete pour for the new Acute Services Building took place on a perfect autumn day. Trucks delivered the concrete to a concrete hopper where a pump (which looks much like a crane) then transferred the concrete up from ground level to flow on the roof of the Emergency Department. Concrete pours are an exact science. An aerator placed near the concrete pour removes unwanted air bubbles. In addition, sections of metal cables are left exposed for special machinery to later tension the cables to ensure the concrete is of optimum strength.



Above: The concrete flows through the pump while the levels are checked with a laser.

Right: While the concrete is poured, our crane Captain Hook continues his work lifting a section of jumpform (a special type of formwork for building vertical concrete structures that rises with the building process) to form a new stair core.

